

WOODCROFT REFERRALS

NEWSLETTER



UNLEASHING PRECISION CARE WITH OUR CT SCANNER

At Woodcroft Referrals we have an onsite CT scanner at the disposal of our referral teams. Using the latest detector panel technology the Revolution ACT model consistently produces images of outstanding quality. With 16 slices (from 0.625mm to 10mm) it allows for detailed veterinary applications and the 20mm detector provides fast scan times at up to 35mm per second, producing high-resolution images with a spatial resolution of 0.28mm.

The CT scanner is available to local practitioners, as a scan and interpretation-only service conducted by our diagnostic imaging department and our own referral veterinary surgeons to further work up referred cases.

Cases that are suitable for CT include but are not limited to:

- - Joint disease
- - Nasal and airway disease
- - Periocular disease
- - Foreign bodies (e.g. pharyngeal stick injuries)
- - Thoracic and abdominal disease
- - Collapsing trachea
- - Intestinal motility problems
- - Abnormal blood vessels

To refer a case for CT only, please complete a referral form on our website - woodcroftreferrals.com





CARDIOLOGY REFERRALS

We are delighted to welcome Zuzanna Uljanowska DVM CertAVP MRCVS to our Cardiology team as a Clinician in Cardiology. Zuzanna will be joining Jane Marshall and our team of cardiology nurses to provide cardiac investigations and case management and is available to see referrals from January 2024.

With an additional full-time vet on the team, we expect the waiting time for appointments to reduce alongside an increase in availability.

Our cardiologists will work synergistically to deliver the best treatment for each patient they see.

Jane and Zuzanna focus on the prevention, diagnosis and treatment of a variety of cardiovascular disorders.

We use advanced diagnostic procedures (including bronchoscopy, ECGs, echocardiograms and fluroscopy) in conjunction with routine diagnostics to provide a complete evaluation for all cardiorespiratory syndromes to achieve the most in-depth diagnosis.

Cases for referral include:

- Asymptomatic and symptomatic heart murmurs
- Dyspnoea
- Episodic weakness and collapse
- Congestive heart failure
- Arrhythmias



Introducing ...

Kate Brooks

BSc BVMS CertVOphthal MRCVS RCVS
Advanced Practitioner - Ophthalmology



Kate has been working with veterinary ophthalmology referrals since 2010 before joining Woodcroft Referrals in 2019.

Prior to joining us, she worked in a busy small animal practice.

Kate is an RCVS Advanced Practitioner in ophthalmology, and particularly enjoys corneal and cataract surgery, which she performs on a weekly basis for the patients that are referred to us.

We are thrilled to have Kate on the team and should you have an Ophthalmology case for her to support you with, please reach out to us.



Introducing ...

Alex Parker-Nicholls

BVetMed PgCertVPS CertAVP(GSAS) MRCVS
Advanced Practitioner in Small Animal
Surgery



Alex graduated from the Royal Veterinary College and spent a year in mixed practice before moving to a small animal hospital in Norfolk, where he gained a passion for orthopaedics.

He gained his certificate in small animal surgery in 2020 and became an RCVS Recognised Advanced Practitioner in Small Animal Surgery in 2022.

Alex enjoys all aspects of orthopaedics, with a particular interest in diseases of the stifle and fracture repair.

Alex joined the Woodcroft Referral team in January 2024 and we are excited to have him on board.

If you would like to refer a case to the Orthopaedic team, please complete an online referral form or email our team on referrals@woodcroftvets.com.

For advice on an orthopaedic case, please email orthopaedics@woodcroftvets.com.



The Scoop on

Cholecystectomies

We see a number of patients at the hospital presenting with gall bladder issues. Some of these patients present via the internal medicine department and others are admitted as emergencies.

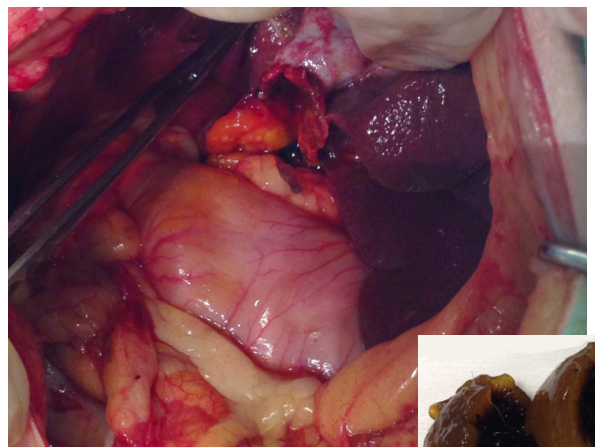
A lot of these patients are incredibly uncomfortable and a cholecystectomy is needed if there is a rupture, tumour, mucocoele or they have choleliths.

These patients have complex anaesthetic needs and require analgesia and anaesthesia plans tailored to them by the surgical team. Our anaesthesia vets and nurses are trained to address these needs and also deal with any complications that may arise.

More advanced surgery is also possible if a biliary diversion procedure is required.

A cholecystoduodenostomy may be performed if the bile duct has ruptured and has to be removed or has a tumour and the bile duct needs to be bypassed.

These patients are often unstable following surgery and require specialist hospital care which our overnight ECC team of vets and nurses provide.



Referral Price List

Survey Feedback



Thank you all for your feedback on our recent survey, we appreciate you taking the time to let us know what we were doing well and where we could improve.

We want to be your referral hospital of choice for 2024 and beyond and so would like to work with you to improve our services and be the best partner you could ask for in the healthcare of your patients.

The survey is still live and available for you to fill in if you haven't already and want to be heard.

Below are some changes we have made in light of your comments which we hope will improve your experience referring to us:

- We will call you or send you an email once your referral has been received so you know that we have things in hand. If you don't hear from us within 48 hours, please do reach out to us.
- We have a price list of services on our website for you to refer to when estimating costs for your client. This can be found at the bottom of our services page. We have also created a QR code (see page 3) that can be scanned to take you directly to this page. If it would help, these codes could also be printed and put up in consult rooms for your vets to refer to.
- Many of you expressed an interest in CPD events for a range of disciplines. We are hoping to publish a CPD calendar soon.
- Some responses expressed you would benefit from a case advisory service. This is already available for most of our disciplines. To get advice on a case please contact our referrals email (referrals@woodcroftvets.com) and the team can forward your request over to the relevant discipline.

CPD Events

Thank you to all who suggested topics that they would be interested in attending CPD for in the coming months. The majority preferred evening events and the most sought after disciplines were:

Dermatology
Internal medicine
Medical ophthalmology
Diagnostic imaging
Anaesthesia

It would be helpful if you could let us know specifically within these disciplines which conditions you are most interested in. We might be thinking:

Dealing with chronic ear cases
Coping with Cushings
Managing a superficial ulcer medically
Interpreting lung patterns
Multimodal analgesia in long anaesthetics

Let us know if we're right and please suggest your own specific topics!

Please email: referrals@woodcroftvets.com

Thank you and look forward to seeing you at one of our evenings later in 2024!



Referrals we offer :

Soft Tissue Surgery
Orthopaedic Surgery
Ophthalmology
Internal Medicine
Cardiology
Dermatology
Diagnostic Imaging - CT & Ultrasound
Dentistry
Veterinary Behavioural Medicine
Physiotherapy/Hydrotherapy