

WOODCROFT REFERRALS

NEWSLETTER



OUR REFERRAL PARTNERSHIP

Supporting You, Your Clients, and Their Pets

At Woodcroft we pride ourselves on working collaboratively with our referring practices. We understand that when you refer a patient, you're entrusting us not just with a clinical case, but with the wellbeing of an animal, the confidence of a client and our combined ability to provide ongoing care.

We endeavour to provide a holistic approach to our cases through our multiple on-site disciplines and 24 hour hospitalisation facilities. We believe in becoming an extension of your care - not a replacement for it.

From the first consultation through treatment and back to your practice, our team is committed to continuity, clarity, and compassion.

Whether it's a complex surgical case, advanced imaging, or multidisciplinary input for chronic conditions, we take pride in offering not just high-quality medicine, but a referral experience that's smooth, thoughtful, and grounded in partnership. Holistic means caring for the pet, the client, and the professional network surrounding them. That includes your time, clinical insight, and your role in your patients' lives. We are here to support you and your patients with the kind of care you'd want for your own.

Service updates:

In May, we very sadly waved goodbye to Donald Wiggins. Having been with the practice for 34 years we know a lot of you will know Donald well and will want to join us in wishing him a very happy and well-deserved retirement.

Helen Baker and Alex Wilson continue to provide our Internal Medicine service and are now joined by Ashleigh Bates who has been with Woodcroft for many years. Please do get in contact if you would like to refer a medicine or ultrasound scan-only case to our team.

Heather Smith, our dermatologist of the last 7.5 years has also moved on to pastures new this month and will be greatly missed by clients and colleagues alike. As a result, we currently have placed a hold on Dermatology referrals whilst we look to recruit a new team member. We will update our referring practices when we are able to accept referrals again.

The Power of Phovia Blue Light Therapy in Healing Skin and Post-Surgical Wounds

At Woodcroft we strive to expand and grow the technologies we use to manage chronic skin conditions and accelerate recovery from surgery. One such technology is Phovia, a blue light therapy system designed to enhance skin regeneration and support wound healing — offering a non-invasive, stress-free approach for pets.

What Is Phovia?

Phovia is a two-part system that uses a specialised blue LED light in combination with a chromophore gel applied to the skin. When activated, this system produces fluorescent light energy (FLE) that penetrates the skin at various depths, stimulating cellular activity without causing tissue damage or discomfort. Unlike traditional phototherapy that can require complex setups or long sessions, Phovia's treatment is quick — typically lasting only a few minutes — and can be administered with minimal restraint.

How Does It Work?

Phovia's light energy stimulates mitochondrial activity within skin cells, which increases ATP production — the cellular “fuel” essential for repair and regeneration.

This enhanced cellular metabolism:

- Speeds up tissue remodeling
- Reduces inflammation
- Promotes collagen synthesis
- Enhances immune response at the wound site

These effects collectively accelerate the healing process in both acute and chronic skin lesions, as well as surgical incisions.

Referrals we offer :

Soft Tissue Surgery
Orthopaedic Surgery
Ophthalmology
Internal Medicine
Cardiology
Dermatology (on hold)
Diagnostic Imaging - CT & Ultrasound
Dentistry
Veterinary Behavioural Medicine (on hold)
Physiotherapy/Hydrotherapy
Laparoscopic Spays & Castrates

Usage in Referral Dermatology Appointments

Phovia has demonstrated effectiveness across a wide range of dermatological conditions, including:

- Pyoderma (bacterial skin infections)
- Pododermatitis
- Atopic dermatitis
- Hot spots and lick granulomas
- Fungal infections
- Pressure sores

By reducing reliance on antibiotics and anti-inflammatories, Phovia supports a more sustainable and resistance-conscious approach to skin care.



Week 1



Week 3



Week 4

Post-Surgical Wound Healing

Surgical sites can benefit significantly from Phovia therapy. Studies have shown that animals treated with FLE postoperatively experience:

- Faster wound closure
- Reduced scar formation
- Less inflammation and discomfort

Our soft tissue surgeons find blue light therapy to be an excellent adjunct therapy for pets recovering from soft tissue surgeries, tumor excisions, and skin biopsies.

By harnessing the healing power of fluorescent light energy, it supports faster, cleaner recovery — with less stress for pets and peace of mind for owners.

Case Study - Tess

IRIS MELANOCYTOMA

Case Surgeon - Marta Lopez Garcia LDA Vet
PGCertSAOphthal MRCVS
RCVS Advanced Practitioner in Veterinary
Ophthalmology

Tess, a 12-year-old Cockerpoo, was referred to our ophthalmology team for evaluation of an iris mass discovered by her regular vet during a consultation for another issue. Upon examination by Marta, one of our ophthalmologists, the clinical presentation suggested a presumptive diagnosis of an iris melanocytoma. The mass was discrete, with no signs of associated uveitis, and the intraocular pressure was normal (10mmHg bilaterally). Based on these findings, Tess's condition was consistent with a benign iris melanocytoma, the most common primary intraocular neoplasm in dogs.



Photo 1

These tumors are typically non-metastatic and are generally benign, although they can cause local invasion within the eye. This often leads to increased intraocular pressure and secondary glaucoma, which can result in vision loss and pain if left untreated.

Due to the low risk of malignancy, biopsy of iris melanocytomas is rarely performed, as it can lead to complications such as intraocular hemorrhage and uveitis. The diagnosis is most often confirmed based on clinical appearance. To assess the extent of the mass, Tess underwent a high-frequency ocular ultrasound (20 MHz probe), which confirmed that the lesion was confined to the iris. No extraocular involvement of the ciliary body or sclera was observed, either clinically or on ultrasound.

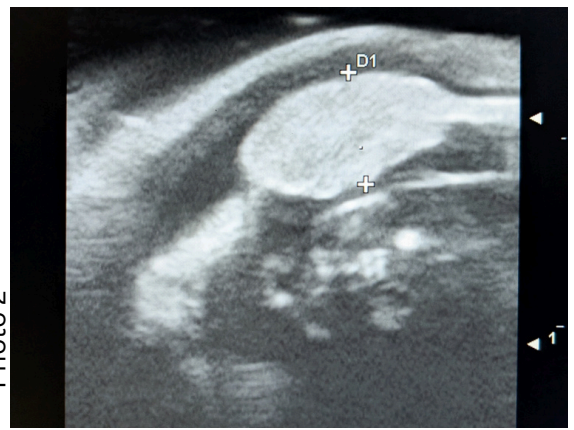


Photo 2

(See Photo 1: Photo of the iris mass; Photo 2: Ultrasound scan showing the globe and the mass confined to the iris)

Given Tess's eye was still functional and comfortable, and considering the discrete nature of the mass, she was deemed a good candidate for laser cyclophotocoagulation. The goal of the treatment was to shrink the mass and reduce the risks of invasion into the iridocorneal angle, which could lead to secondary glaucoma.

Under general anesthesia, the mass was treated with a diode laser. The mass responded well to the treatment, and visible shrinkage was achieved. Laser photocoagulation of iris melanocytomas aims to either destroy smaller lesions or, as in Tess's case, reduce the size of the mass and slow or stop further growth. While this treatment is often successful, ongoing monitoring is essential, as some cases may require additional treatments or long-term follow-up to check for regrowth.



Photo 3

Although malignant transformation of iris melanocytomas is rare, diode laser treatment can also help mitigate this risk. This non-invasive diode laser photocoagulation is a safe and effective treatment option for isolated, pigmented iris masses in dogs, offering a promising solution for cases like Tess's.

(See Photo 3: Marta and Kate performing the laser treatment on Tess in theatre)

TPLO Summer Offer

Updated package price of **£3750** for all sizes

This summer, we're pleased to offer a special package-price TPLO at £3750, regardless of weight.

It's the same high standard of surgical care from our experienced orthopaedic team but at a discounted price.

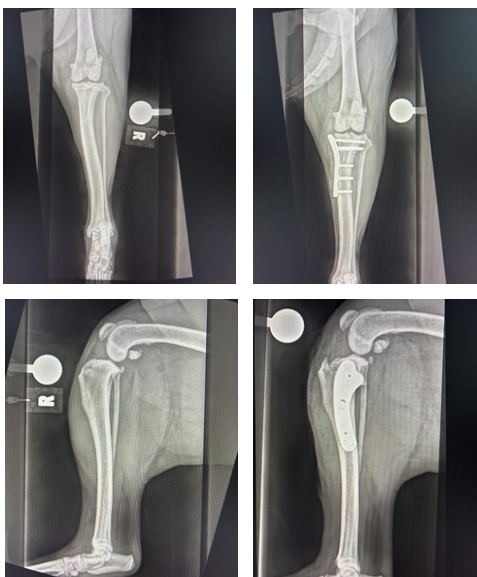
What's included:

- Initial Consultation
- Pre-operative bloods
- Diagnostic x-rays
- General anaesthetic
- TPLO Surgery
- Post-op x-rays
- Post-operative medications
- Post-operative overnight hospitalisation

This offer is available for a limited time, helping you provide affordable surgical options to your clients, while maintaining clinical excellence.

To discuss a case or make a referral, please visit our online referral form:

www.woodcroftreferrals.com
[0161 486 2333](tel:01614862333)



**SCAN FOR
REFERRAL PRICES**



Veterinary Dermatologist Opportunity

Woodcroft Referrals is seeking an Advanced Practitioner in Dermatology to join our friendly, multi-disciplinary referral team.

Based in our purpose-built Stockport hospital, you'll manage a varied dermatology caseload independently, supported by dedicated RVNs and a referral coordinator.

With on-site CT, video otoscopy, blue light therapy, and a dedicated dermatology suite, you'll work closely with our surgical and medicine teams to deliver outstanding care. A strong team spirit and excellent communication skills are essential.

Salary depending on experience.

Interested?

Contact our HR/recruitment manager Fiona Knight at recruitment@woodcroftvets.com for a non-committal conversation or to submit your CV and cover letter.